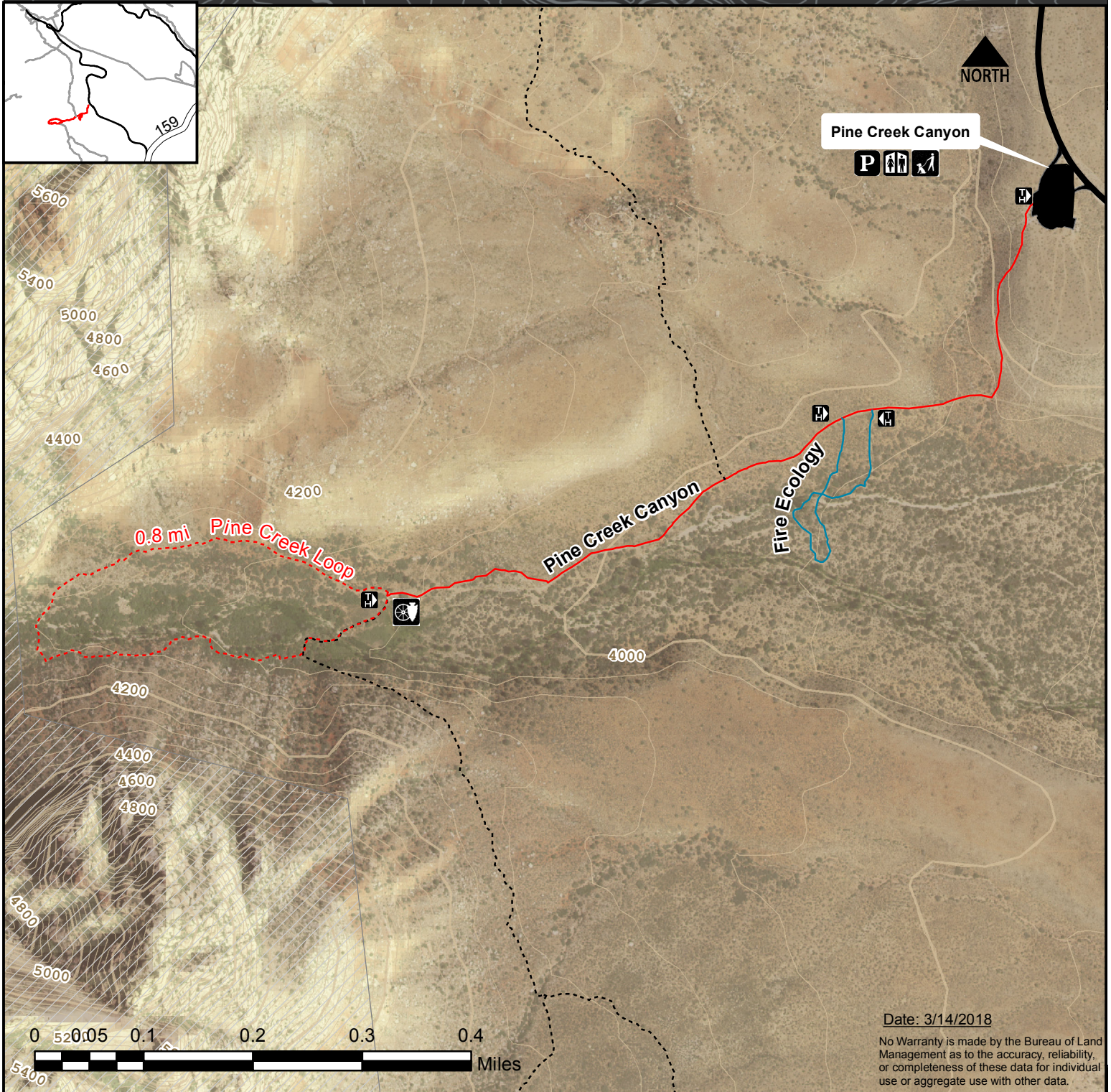




# Pine Creek Canyon Trail Head: 18. Pine Creek Canyon 19. Fire Ecology



Date: 3/14/2018

No Warranty is made by the Bureau of Land Management as to the accuracy, reliability, or completeness of these data for individual use or aggregate use with other data.

## Legend

- |                    |                     |   |                                       |
|--------------------|---------------------|---|---------------------------------------|
| Parking            | Historic site       | <b>18. Pine Creek Canyon</b>                      | <b>19. Fire Ecology</b>               |
| Restrooms          | Scenic Drive        | Elevation: 3953' (low) - 4052' (high)             | Elevation: 3960' (low) - 3993' (high) |
| Trail access point | Existing trails     | Distance: 1.60 mi / 2.57 km to homestead and back | Distance: 0.40 mi / 0.32 km loop      |
| Leashed pets       | Wilderness boundary | Average time: 2 hrs                               | Average time: 55 min                  |
|                    |                     | Difficulty: MODERATE                              | Difficulty: EASY                      |
|                    |                     | Trail uses:  Hiking                               | Trail uses:  Hiking                   |